



"Willow Rocks" Blue Ridge Retreat



Views of Tinker Mountain
from
Main House Loft and Balcony



Parking Circle

Back to WillowRocks Site



MOUNTAIN ESTATE

A stately willow tree is the first of many surprises that you'll find at our "Mountain Estate". Others are the level, rock lined driveways, gentle slopes, Saltbox buildings, and Blue Ridge Vistas.

BIRDSEYE VIEW of LEVEL ACREAGE

**Guest
Cabin**

LOT-2A

**Main
House**

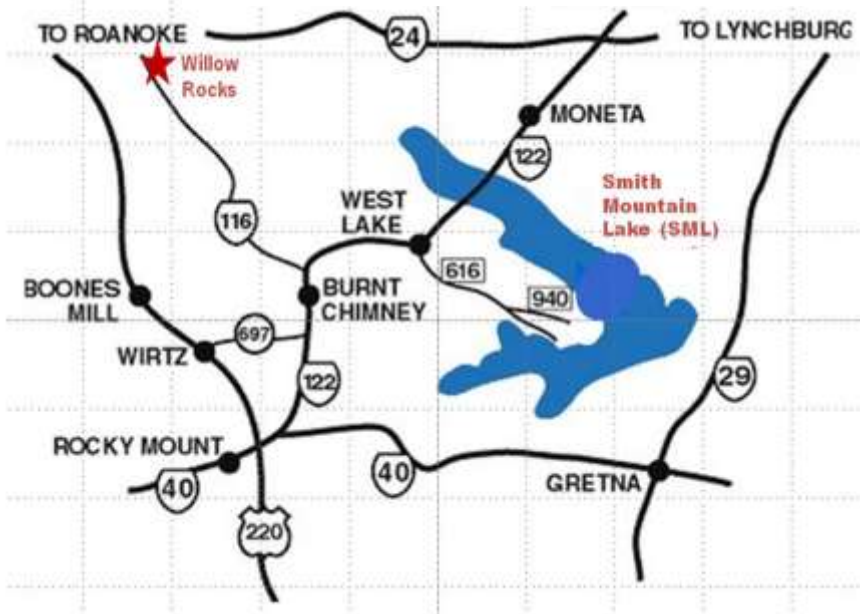
Drive to SR-116

Kalena Dr <Private Access Rd>

LOT-1



LOCATED IN VIRGINIA'S BLUERIDGE



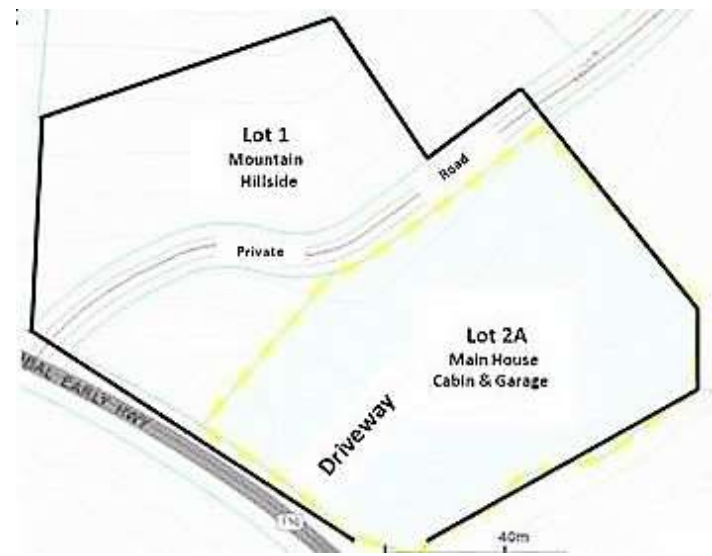
Location, location,
location !

Our mountain acres are just minutes from a major city, with its hospitals, airport, and shopping malls, yet also only minutes from a lake with a 500 mile shoreline.

[See weblink for map.](#)



[TOP](#)



<http://tinyurl.com/ybvmo5ku>

COUNTRY LIVING 'COMPOUND'



[TOP](#)



In winter, the main house is still screened by trees. The garage has 2-stories and is convenient to the house. The circle makes entry & exit easy, even on snowy winter days. Bradford blooms show Spring has arrived.



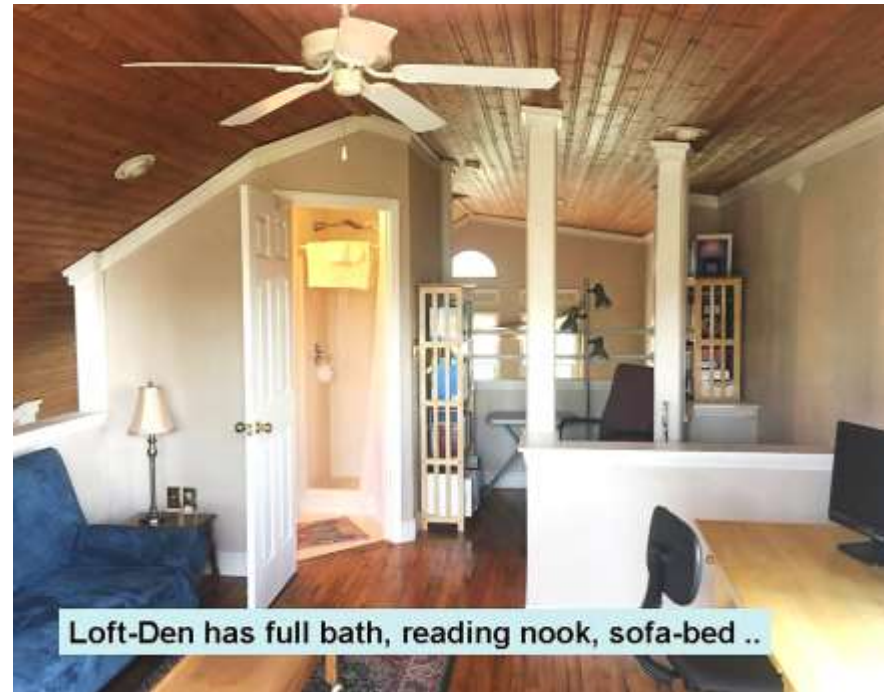
TOP



MAIN HOUSE FEATURES

The main house provides 1-floor retirement living with elegance: a cathedral wing with high pine ceilings, a loft office with balcony and bath, and a huge deck. The basement entry opens to a finished workshop and cellar.

Main House Master Bedroom



Loft-Den has full bath, reading nook, sofa-bed ..

TOP

Main House 2nd Bedroom



2 BEDROOMS + GUEST

The 'bedroom wing' of the main house has two large bedrooms (ea >200sf) and a loft-office guest-room that is in constant use by visiting teens and adult guests. There are two walk-in closets, two full baths, a laundry, & a tiled foyer

GUESTS OF ALL KINDS

**Guest House
Patio & Yard**



**Guest House
Garden View**



[TOP](#)

**Our guest cabin is a
1400sf living space
(2BR / 1BA / GREAT ROOM)
with den, sunroom, and an
inviting stone patio well
suited for parties and Sunday
breakfasts. It has 3-car parking
and is often filled
with visitors.**

**Guest House
Parking Side**



PINE PANELED GUEST CABIN



**Guest House
Great Room**



**Guest House
BR - 1**

[TOP](#)



**Guest House
Eat-in Kitchen**

The cabin has a knotty pine theme with oak trim. Its 'great room' has FP and eat-in kitchen; & washer / dryer in the bath. The main bedroom has a walk-in closet (4x16.) Upstairs is 2nd bedroom (12x16), a den and a 'Sun Room' with views

VIEWS AND SPACE TO PLAY



Whether you entertain on the deck or check out sports and yard equipment from the barn, you will find that the hallmark of this property is “space” for leisure activities.

A photograph of a loft office with a wood-paneled ceiling, a white ceiling fan, a desk with a computer, and a blue sofa. Large windows and a glass door provide natural light and views of the outdoors.

**Main House
Loft - Office**

CATHEDRAL CEILINGS

A photograph of a bar and dining room featuring a curved bar, a dining table with a floral tablecloth, and a large window. The room has a wood-paneled ceiling and a white ceiling fan.

**Main House
Bar & Dining Room**

[TOP](#)

A photograph of a living room with a wood-paneled ceiling, a white fireplace, a piano, and a large window. The room has a wood-paneled ceiling and a white ceiling fan.

**Living
Room**

The main house has
18' Cathedral Ceilings.
Rooms are large, and their
openness and wood paneling
have a casual charm
that is truly
unusual.

HOBBIES ?



**Guest House
Sun Room**

TOP



**Garage Studio
Window**



**Basement
Hobby Room**

**Hobbies anyone?
Our sun room has hosted
star gazers, quilters –
teens and their parents.
The 300sf garage studio serves
painting, PC hobbies, and crafters,
The basement room is bright,
has plenty of power
for tools.**



**Main House
Dining Doors**



**Entry To Hobby
Room & Cellar**

[TOP](#)



**Guest House
Stone Patio**

**These are the
“out door views”
of the stone patio,
the basement entryway,
the main house balcony
and the dining room
French doors
to the deck.**

Living Room



TOP



**Garage Studio
Balcony Door**

**Bright and open views
show the window wall
of the main house living room,
the doorway to the garage studio
balcony, and the
Guest Cabin 2nd bedroom
with its
balcony door.**

CLOSE TO ROANOKE AND TO SMITH MOUNTAIN LAKE



Check Out Roanoke



Some visitors are surprised to discover how cosmopolitan is Roanoke, and how beautiful and fun is Smith Mountain Lake. Check out the Web links.



TOP

Check Out SML



LOCATION, LOCATION, LOCATION & SPACE, STYLE, and INCOME

Location: close to the city: Roanoke center city offers art and symphony, fine dining and casual clubs, a unique farmer's market, museums and theatre ... passenger rail ... all within a 15 or 20 minute drive.

Location; close to the lake: Rent a pontoon boat, house your speed boat in a 'boatel', launch your john-boat and fish .. at Bay Roc Marina on SML, all less than 15 minute drive away.

Location: central to the region: We are 35 minutes or less to airport and all local town centers, shopping malls, both hospitals and ball park, both convention centers and several museums, boal rentals, SML entertainment center.

Location: mountain estate 'with benefits': Beautiful vista, acres of rolling landscape and private natural hillsides; level access to state highway makes county living easy; parking circle, space for RVs, trailers, boats and other 'toys'.

Space (for sports, partying, hobbies, & visitors): Main house has unusual features - cathedral ceilings, two sided fire place, spiral stair to loft room, with bath and balcony. Huge deck (650sf), modern kitchen, dining for 12. Garage studio and basement hobby room. Guest cabin sun room has mountain views. Guest Cabin stone patio is great for sunset leisure. Yard barn and garden shed support outdoor activity. Plenty of space in landscaped yard for sporting gear of all kinds.

Income potential (furnished lodging for tourists): There is room for family, friends, business associates, even short term Blue Ridge tourists. We have hosted house-hunters, a traveling nurse, and vacationers. This single family property is a permitted site for short-term furnished-rentals via on-line Airbnb bookings. To accommodate paying visitors, owners have lived in their cabin from time to time.

CONNECT

"Willow Rocks" Windy Gap Estate

| | |
|------------|---|
| Slide Show | http://tinyurl.com/SlideShow-838378 |
| Video Tour | http://tinyurl.com/Video-838378 |
| WR_FAQ | http://www.willowrocks.net/wrfaq.pdf |
| WR_Map | http://tinyurl.com/ybvmo5ku |

[TOP](#)

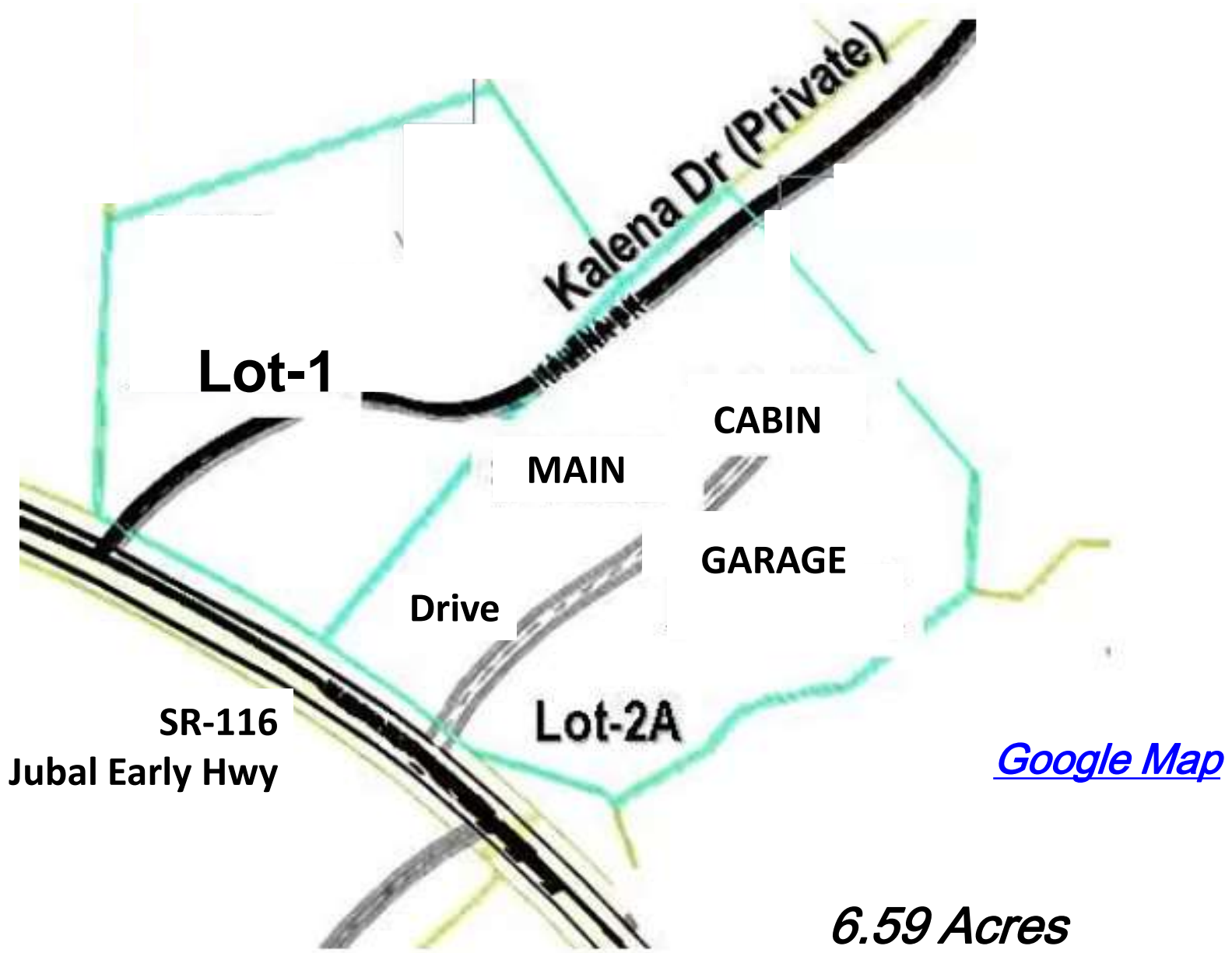
| | |
|------------|---|
| SML Views | https://tinyurl.com/y8zbmm9d |
| Blue Ridge | https://www.visitroanokeva.com/plan/reasons-to-visit/ |
| Roanoke | https://tinyurl.com/Roa-City |

| | |
|-------------|--|
| Rental Site | http://www.windygap-lodge.net |
| Agent | gist4bus@earthlink.net Phone: 540-650-0714 |

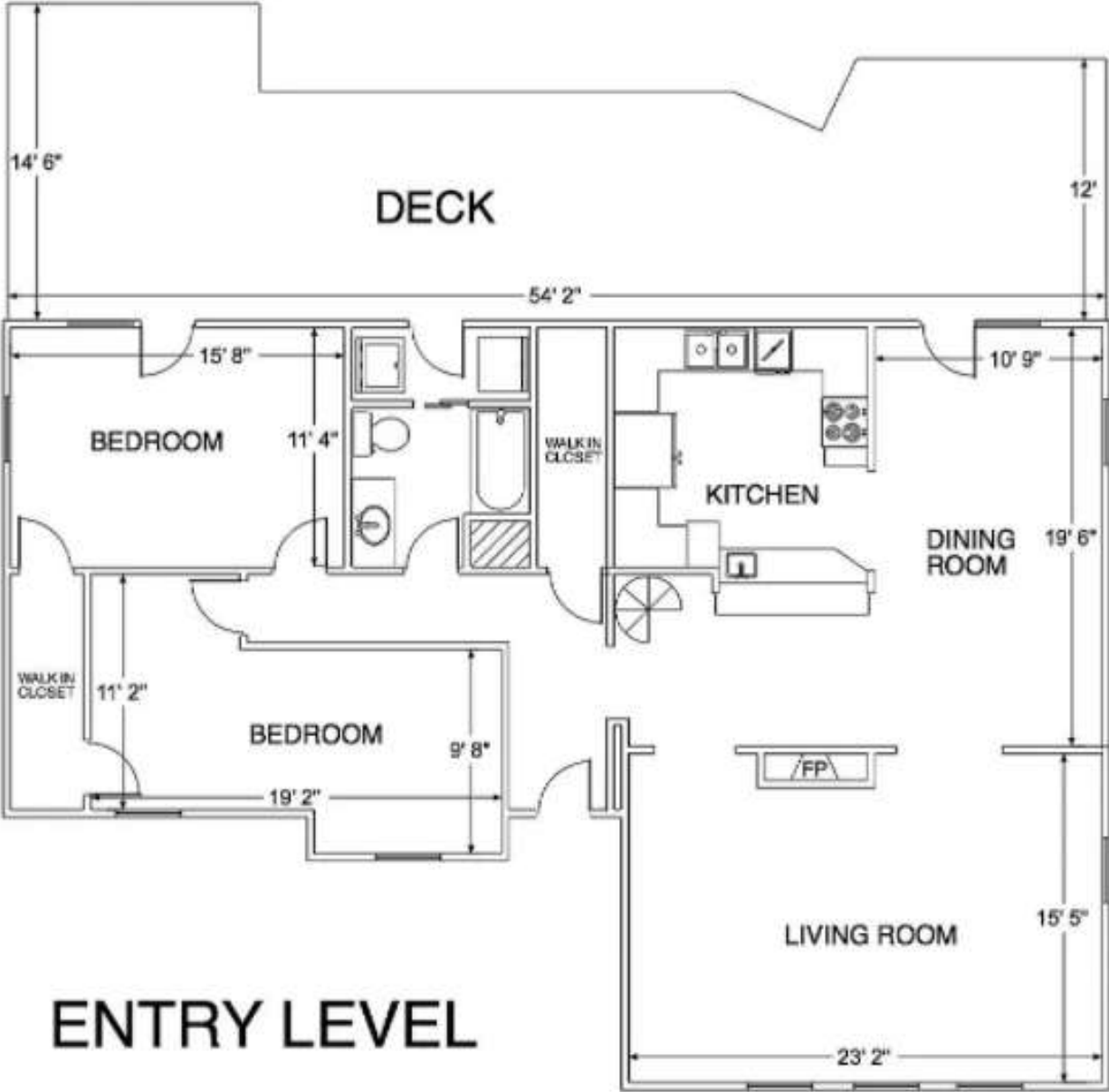
Sales Agent *Lorie Ranson* Phone: 540-309-5666

e-Mail: lranson3@yahoo.com [Zillow - 7638 Jubal Early 24101](#)

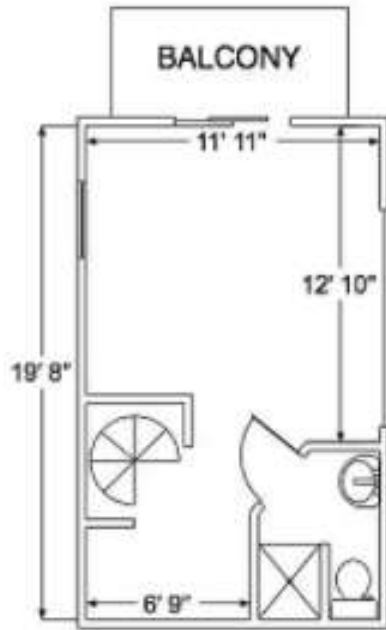
COUNTY GIS PLATS



MAIN HOUSE FLOOR PLAN



ENTRY LEVEL

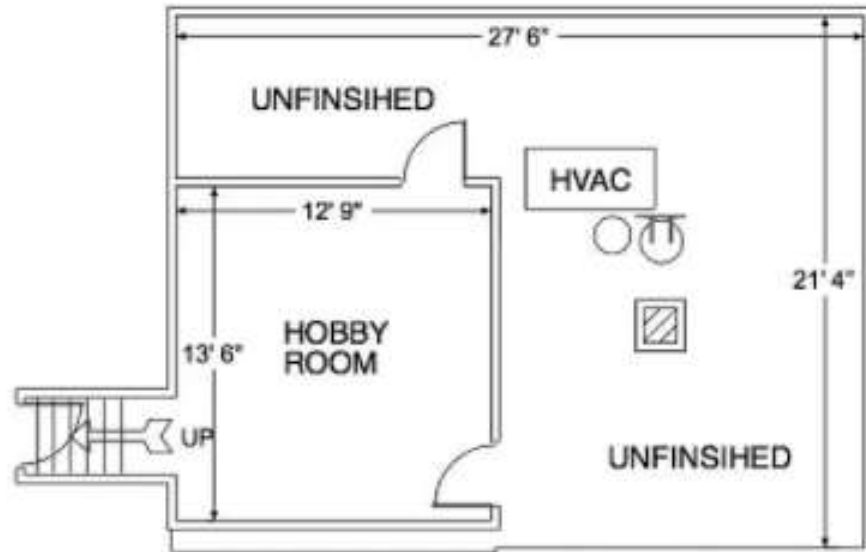


MAIN HOUSE

2nd FLOOR

MAIN HOUSE

BASEMENT



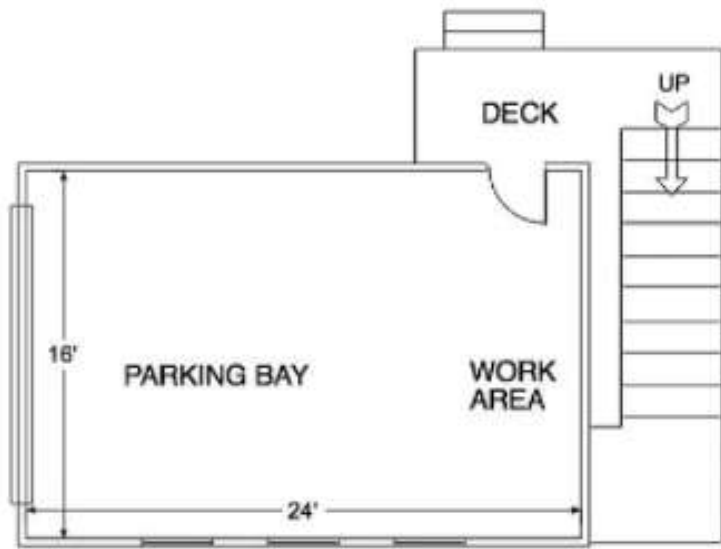
GUEST CABIN LAYOUT



ENTRY LEVEL

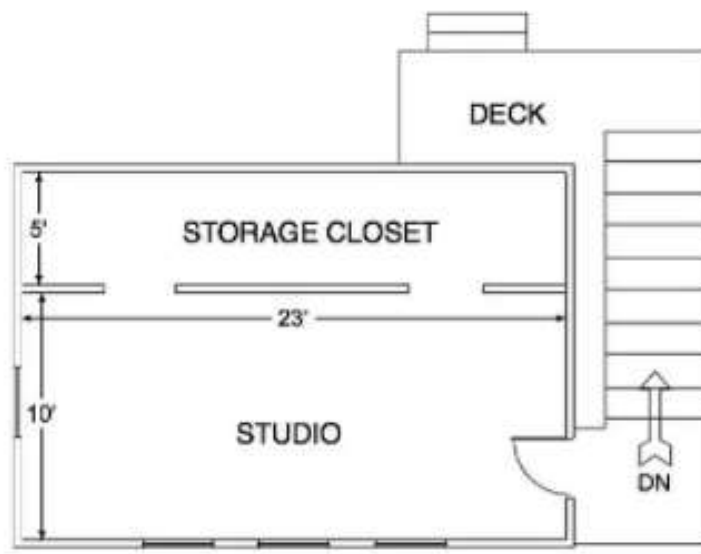
UPPER LEVEL





DETACHED GARAGE

LOFT



ESTATE with KALENA DR, and DRIVEWAY to SR-116

